

martin-thornton.com
01484 508000



Upper Brow Road, Paddock Huddersfield,

Offers over £100,000

BEST AND FINAL OFFERS ARE INVITED ON THIS PROPERTY BY 12 NOON MONDAY 3RD AUGUST

Open to view dates:

Sunday 12th July 5.15pm - 5.45pm
Thursday 16th July 9.15am - 9.45am
Thursday 23rd July 4.30pm - 5pm
Sunday 2nd August 10am - 10.30am.

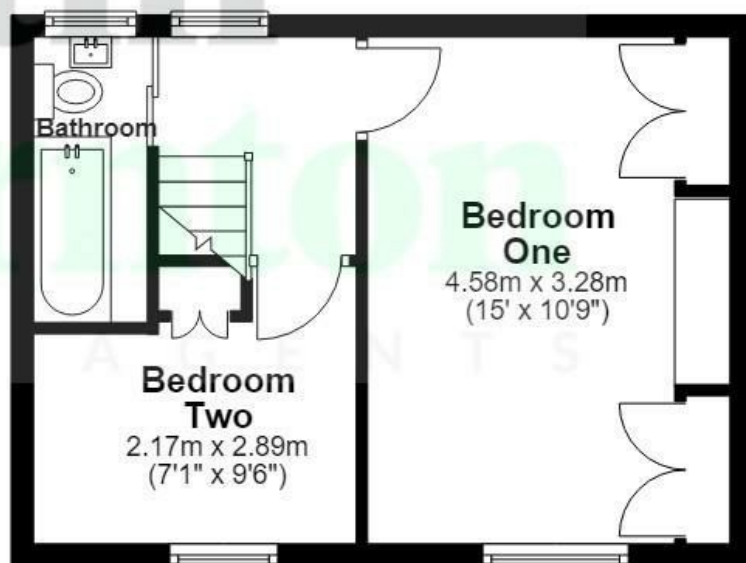
This two-bedroom mid-through terraced property enjoys a southerly aspect and is not immediately overlooked to the front or rear. By extending over the passageway, it offers slightly larger first floor accommodation. It is priced to allow for modernisation and updating, and offers excellent potential to the right buyer wishing to put their own stamp on the property. The accommodation comprises an entrance lobby, good-sized living room, kitchen and useful storage within the cellar. On the first floor, there are two bedrooms and a bathroom. The property has part uPVC double-glazing. Externally, there is a yard area to the rear and the former outside toilet. Beyond this, there is further land which could be utilised, in a similar way to the neighbouring properties. The front of the property has a lawn and enjoys a southerly aspect, which can be a real sun trap. Internal viewing is advised to see what work is required and to assess the potential on offer. This property is offered with the advantage of no onward chain.



Ground Floor



First Floor



All Measurements are approximate and for display purposes only
Plan produced using PlanUp.

Upper Brow Road, Paddock Huddersfield,

Details



Entrance Porch

An external uPVC door gives access to the entrance porch, which is light and bright with uPVC glazing to three elevations. The front of the property enjoys a southerly aspect. From here, a timber and glazed door opens into the entrance lobby.

Entrance Lobby

The lobby has an inset matwell, a staircase rising to the first floor accommodation and access to the living room.

Living Room



This good-sized principal reception room is positioned at the front of the property. It is light and bright with a large uPVC window enjoying the southerly aspect and maximising natural light. As the floor plan dimensions show, this room can easily accommodate a good amount of furniture. The fire surround incorporates a gas fire. A door leads into the kitchen.

Kitchen



The kitchen is positioned at the rear of the property and has wall cupboards and base units, worktops and a stainless steel sink. It has space for a freestanding gas cooker. Beneath the worktops, there is space for appliances; plumbing for an automatic washer and space for a fridge or freezer. There is a rear uPVC window and a timber and glazed external door. Off the kitchen, stairs lead down to useful storage within the cellar.

First Floor Landing

From the entrance lobby, the staircase rises to the first floor accommodation. By extending over the passageway, the first floor accommodation is slightly larger than the ground floor. The landing has a single glazed rear window.

Upper Brow Road, Paddock Huddersfield,

Details



Bedroom One



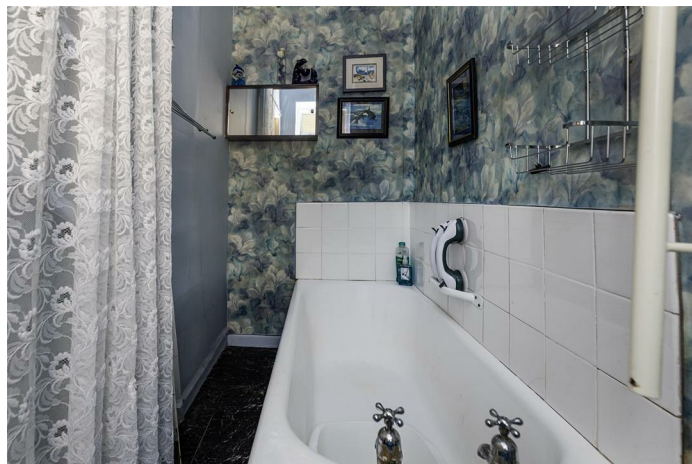
This large double bedroom is positioned at the front of the property and has treble and quadruple wardrobes, a matching dressing table and drawers. There is a uPVC window.

Bedroom Two



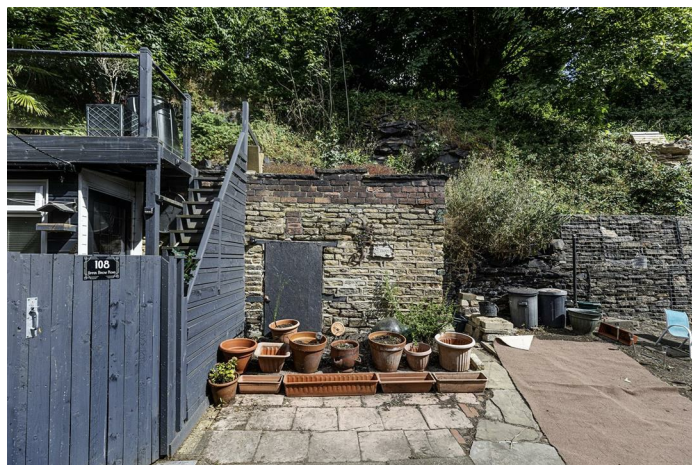
This double bedroom is positioned at the front of the property and has a built-in airing cupboard with a cylinder over the staircase projection. There is a uPVC window.

Bathroom



The bathroom has a three-piece suite comprising a bath with tiled surround, high-flush WC and pedestal wash hand basin. It has a single-glazed rear window.

External Details



The raised front garden is a real trap, enjoying a southerly aspect. There is a lawned area, space for tubs, pots and planters and a garden seat. At the rear, there is a yard area and the former outside toilet. Beyond this is an area that could be accessed via steps to create a garden with possibly landscaped or decked.

Tenure

The vendor informs us that the property is leasehold and we await further information.

Upper Brow Road, Paddock Huddersfield,

Directions

